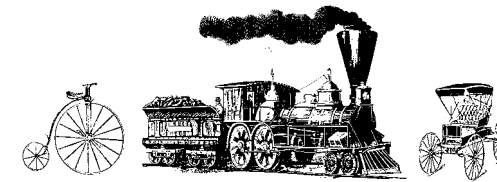


**Wheels Across the Prairie Museum**

PO Box 1091 • 3297 Hwy. 14  
Tracy Minnesota 56175  
www.wheelsacrosstheprairie.org



Board Members:  
Jon Wendorff – President  
Jane Muedeking – Vice President  
Billie Jo Lau – Treasurer  
Priscilla Muske – Secretary  
Marcy Schramm – Historian



Wheels Across the Prairie Museum

# The Waggin Wheel

P.O. Box 1091 • 3297 Hwy. 14 • Tracy, MN 56175 • (507) 626-1949 or (507) 829-5145

Spring 2019

www.wheelsacrosstheprairie.org • info@wheelsacrosstheprairie.org



Open Weekends in May Sat 10-5 Sun 1-5, June thru Labor Day Wed-Fri 1-5, Sat 10-5, Sun 1-5, September Weekends 1-5. Weather permitting.



*Wish list:*

- Our Town Hall needs a new roof along with The Depot
- St. Mark's needs three windows repaired
- The Depot needs painting

## Membership

It's what helps us 'keep rolling'

Dear Wheels Across the Prairie Museum  
Members and Friends...

The Wheels Across the Prairie Museum appreciates your support of the educational services, exhibits, and programs provided by the museum. Many exciting things continue to happen at the Wheels Museum and we want you to be a part of them. We look forward to your continued interest and support in the coming year.

At this time, we ask that you sustain your membership, or join if you are not already a member. The categories are listed below. Please mail your membership coupon to:

**WHEELS ACROSS THE PRAIRIE MUSEUM**  
PO BOX 1091 • TRACY, MN 56175

Thank you for your membership and believing in preserving our past for future generations.

Sincerely, Wheels Across the Prairie Board Members

## Wheels Across the Prairie 2019 Membership

PO Box 1091 • Tracy, MN 56175  
info@wheelsacrosstheprairie.org

Benefits include free admittance to the museum  
& two newsletters per year.  
The Wheels newsletter is also posted on our website.

Name: \_\_\_\_\_

Address \_\_\_\_\_

City/State/Zip: \_\_\_\_\_

### LEVELS OF MEMBERSHIP

(Due annually on May 1)

- \_\_\_\_\_ Individual – \$20
- \_\_\_\_\_ Couple – \$25
- \_\_\_\_\_ Family – \$35
- \_\_\_\_\_ Business – \$100
- \_\_\_\_\_ Other – \$\_\_\_\_\_

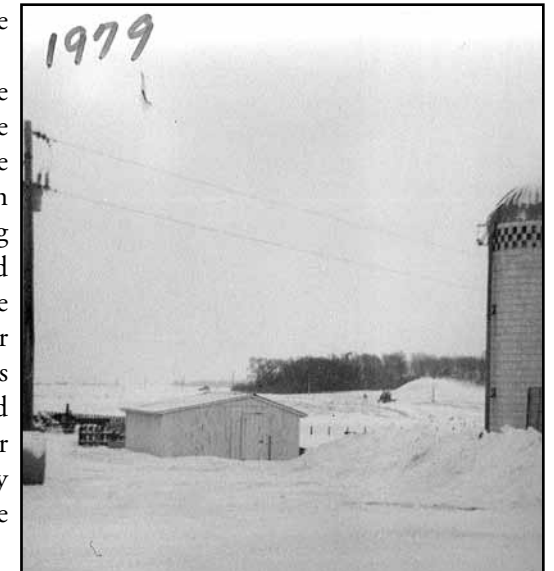


## SPRING FEVER

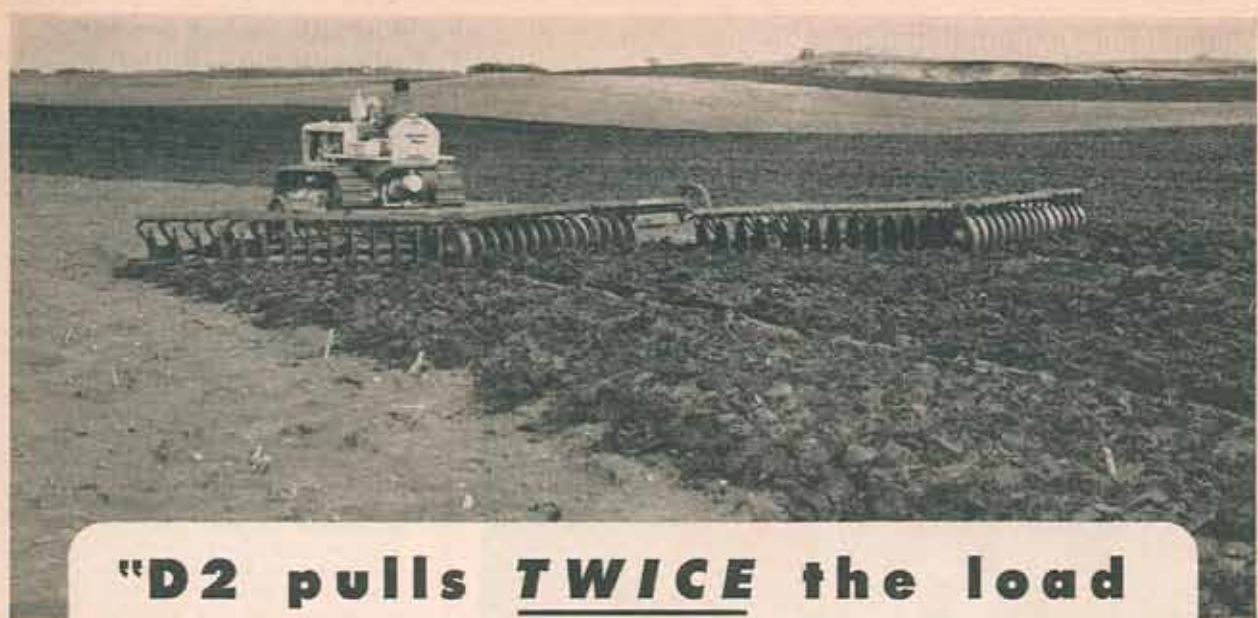
By Jon Wendorff

Winter of 2018/19 what can we say? I'm sure we all recall big snows like the winter of '68, '69, '75, '95, '96 pictures show what life is like in the winter, pictures courtesy of Joe Cooreman family.

Drifts are all we see at the museum the crazy wind can sure make them tall, can you imagine living in the log cabin and surviving a winter like this one, Thankful for the hearty Minnesotans who tamed this land and respected mother nature as we do today all we can say is 'Please bring Spring!'



Our Mission at Wheels Across the Prairie Museum: To collect, catalog, preserve, display, and interpret relevant historical artifacts, and to provide information to visitors.



**"D2 pulls TWICE the load  
on HALF my old fuel cost"**

... BEN M. TROUT, TRACY, MINNESOTA



The hitch of two 15-foot single disks means 90 acres of good tillage in 10 hours, behind this D2. Ben Trout, Tracy, Minnesota, (inset) reports a fuel cost under 30c an hour for his D2.

"My D2 pulls twice as big a load as my old tractor, on about one-half the fuel cost," states Mr. Trout. "No pain, no strain, no worries—no steering wheel to fight. You just watch the acres go by."

Wouldn't you like to sample such satisfaction (and profit advantages) as "Caterpillar" Diesel Tractors deliver? See your "Caterpillar" Dealer about an early demonstration of the size you need.

#### Compare Price—Compare Value

Price of the 50-inch gauge Diesel D2 is \$3,415.00, f.o.b. Peoria, Illinois. (Price subject to change, without notice.) That figures to only \$854 per plow bottom of capacity. Compare D2 price to any other tractor's, on this basis. Then compare performance, operating thrift, bonus years of tractor life. Compare value.

CATERPILLAR TRACTOR CO., PEORIA, ILLINOIS

**CATERPILLAR**  
REG. U. S. PAT. OFF.  
*Diesel Farm Tractors*

DIESEL ENGINES • TRACTORS • MOTOR GRADERS • EARTHMOVING EQUIPMENT

I just find it amazing what some people save, granted not everything is worth keeping, but certain things to some people are consider worth it.

Are you thankful that 42 years ago some Tracy area residents decided that we should have a historical society to preserve the past for future generations? As a History buff I am so very thankful for all of them. We are also thankful for those individuals that have diligently saved artifacts from there lifetime to share with others, it's like Christmas when we get a new donation, we are always thinking of new display's to present to all of you.

Over the winter we have received some excellent artifacts, be sure to stop out this spring.

We are always on the lookout for treasures to save, granted our funds are low, some of you, perhaps, watched the demise of the Red Rooster building, and the State Farm building soon will be razed, besides being home to State Farm, this building was also home to Victory Café and other businesses. Too bad we can't move it, just call me MLL – always thinking always dreaming! :)

...

As we start our 34th year, we are eager to get back to work at the museum.

A recent article caught my eye: "Old But Alive," *"There are remarkable people living everywhere, but nobody notices them because they are old. We live in and age when old people are supposed to be as transparent as a sheet of glass...you are becoming more and more transparent as well."* – Henning Mankell

When thinking of old people what age is considered old?

We all have our own answer to that question, but what we should be doing is talking to the older generation, imagine the things have seen in there lifetimes, what do they recall? Yes we have newspapers



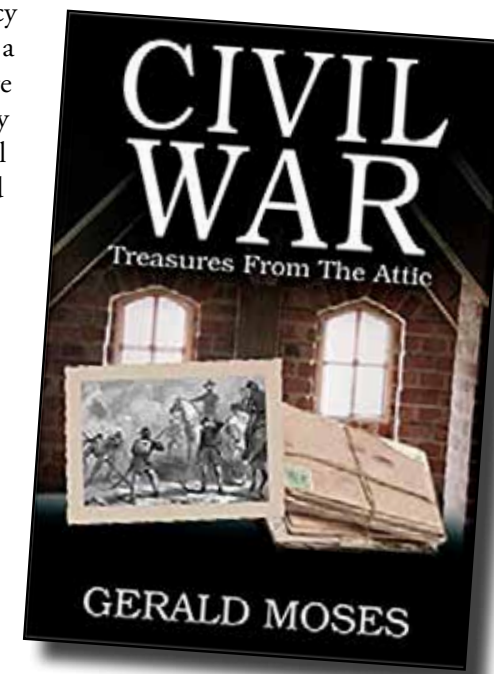
**Thank you to all our volunteers!**

Our Thanks to our Board Members who give their time and talents to the Wheels museum:

Volunteer Wheels Across the Prairie Board of Directors:  
Jon Wendorff – President  
Jane Muedeking – Vice President  
Billie Jo Lau – Treasurer  
Priscilla Muske – Secretary  
Marcy Schramm – Historian

Volunteer Wheels Across the Prairie Board Members: Becky Averill, Jim Babcock, Ron Boje, Muriel Coulter, Garry Hippie, Jim Julien, Jeff Meyer, John Meyer, Seth Schmidt.

With out these fine dedicated people and ALL of our members we would not have the Wheels Across the Prairie Museum.



to tell us the prices of coffee, eggs 'n' sugar, but it's their stories, memories that need to be recorded, if not for your own family histories, but for future generations to come. I recently read *Civil War Treasures From the Attic* by Gerald Moses the letters are between a husband and his future wife, his journal of the Civil War an excellent read and a Tracy connection!

In our archive room we have letters like the above mentioned, but from a different time period. What memories lay tucked away in your attic?

...

We have some new displays coming this spring, but you will have to come to the Wheels to check them out. No little bird is going say what they are...stay tuned!

...

You can always check us out on Facebook or our website [www.wheelsacrosstheprairie.org](http://www.wheelsacrosstheprairie.org). We also have 'If You Grew up in Tracy Remember When?'; 'If You Grew Up in Amiret Remember When?'; and 'If You Grew up in Garvin Remember When?' It's fun to read all the comments and learn new bits of history facts.

#### BANANA, CHERRY NUT BREAD

(By Cora Starken)

1/2 cup butter  
1 cup sugar  
3 medium bananas  
3 eggs  
2 cups of flour  
1 scant tsp. Soda  
1/2 cup nut meats  
1 bottle maraschino cherries (sliced & drained )

Mix like any other bread, until you put in cherries, than fold over carefully. Bake in a loaf pan 350 degrees for 1 hour.

#### MARK YOUR CALENDARS!

Please join us for our

**ANNUAL MEETING**  
Sunday, May 19, 2019 • 6:00 p.m.

**Marcy Schramm will be speaking**  
Includes the Election of Officers and a short business meeting.

**FREE & OPEN TO THE PUBLIC!**  
**EVERYONE IS INVITED!**